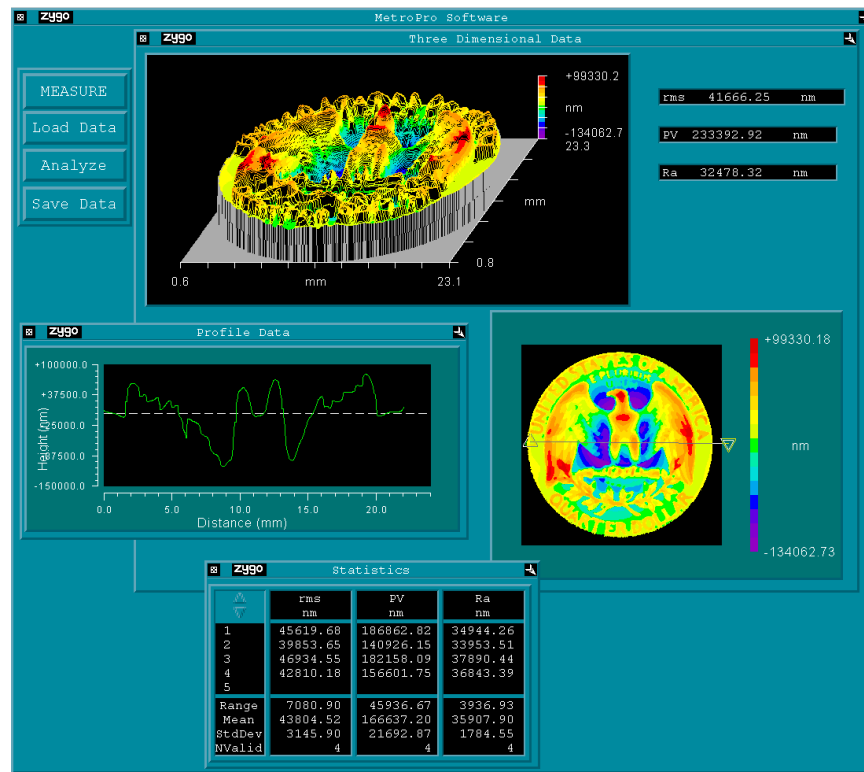


What is MetroPro?

MetroPro transforms data from ZYGO’s instruments into measurement results. Data is converted into graphic displays and numeric results and displayed on the MetroPro screen. MetroPro provides full-featured, precision measurement software that includes standard applications to get you started quickly, and the tools to make your own special applications. Once you learn the basic operation of the mouse, menus, and windows, it is easy to get the results you want.



Minimum System Requirements

- Microsoft Windows 7 Professional, 64-bit
- Dell computer, 3 GHz or faster, with quad core processor
- 24-inch monitor
- 4 GB RAM
- 500 GB hard disk drive
- CD/DVD RW drive

MetroPro Media

MetroPro is factory installed. The supplied MetroPro DVD serves as backup. In the default configuration, there is a “C:\MetroPro” directory, which contains MetroPro files, and a “zygo” user account.

Backup copies of unique instrument files, such as calibration, camera, and system files, are provided on the original MetroPro DVD.

The Quick Start Overview



It is *not* necessary to install MetroPro; it is factory installed.
For information on Windows administrator and user account functions refer to Microsoft Windows documentation and help files.

1. Turn on the computer and instrument.
2. Log on as the “administrator,” with “zygo” as the password.
3. Open MetroPro, select the Edit/View Licenses command, and enter licensing codes. These values are provided by ZYGO and are linked to the computer.
4. If desired, create Windows user accounts.



Individual user accounts other than users\zygo have to be manually created and the C:\MetroPro\apps directory copied to them.

5. Log off as the administrator.

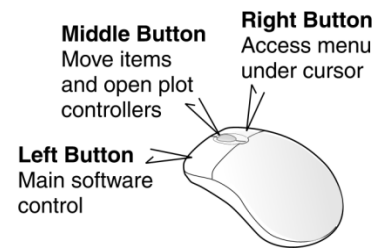
Using the Mouse

Software interaction is with both a mouse and keyboard.

The *left* mouse button is used primarily to activate screen buttons and controls.

The *middle* mouse button is used to move items and to open control panels for plots (plot controllers).

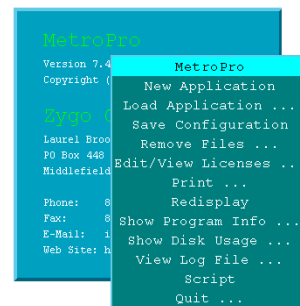
The *right* mouse button is used primarily to display menus and choose commands from them.



Accessing Menus

MetroPro uses pop-up menus instead of a menu bar. To access an item’s menu, position the cursor over the item (window, control, plot, result, or button) and press the right mouse button.

This menu is accessed at the top level MetroPro Window. Select the Load Application command to load applications into the MetroPro “base” window.



The “Administrator”



ZYGO recommends that one person should take the role of the “administrator”. This person is responsible for controlling the use of MetroPro. The “administrator” manages the workstation’s overall configuration and has complete control over the read and write access of directories. Improper use of administrative functions can cause system difficulties and failures.

Administrator Log On

In the Log On to Windows dialog box, enter “administrator” as the username, with “zygo” as the password.



Details on the administrator’s role and how to manage users and passwords are found in Microsoft Windows documentation and help files. The administrator may want to change their password from “zygo” to one of their own choice.

Licensing MetroPro

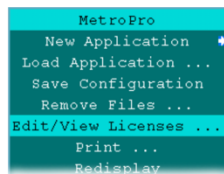
It is necessary to license MetroPro to make measurements, load existing data, and use specialized applications. MetroPro and separate licensable applications are licensed by entering dates and key codes in the MetroPro Edit/View Licenses window. These values are provided by ZYGO and are linked to the serial number of a hardware key or computer processor serial number.

1. Connect the hardware key to one of the computer’s USB ports. If you want to use the processor serial number, refer to the next procedure before continuing.
2. Turn on the instrument and the computer.
3. Log on to Windows as the “administrator” and open MetroPro.
4. Press the *right* mouse to access the MetroPro Window menu and choose Edit/View Licenses.
5. For each applicable option, a Start Date, End Date, and Key must be entered. To enter a value, click on the item with the *left* mouse button, type in the date or key and press Enter. Dates and key codes are supplied by ZYGO. When completed, click the Done button to close the window.



There must be entries under the ID column before dates and key codes can be entered. If there are no numbers in this column, contact Zygo Customer Support.

Entering Licensing Values in the Edit/View Licenses Window



For each applicable option, a Start Date, End Date, and Key must be entered. To enter a value, click on the Date or Key with the left mouse button, type in the value and then press <Enter>. Codes are supplied by Zygo. Click the Done button to close the window.

Enter Values in these columns

zygo		Edit/View Licenses			
ID	Option	Start Date	End Date	Key	
1	660020044 MetroPro 7.4.2	000-01-1990	000-01-2010	0000-0000-0000-0000	
2	660020044 ABS Geometry	000-01-1990	000-01-2010	0000-0000-0000-0000	
3	660020044 Advanced Geometry	000-01-1990	000-01-2010	0000-0000-0000-0000	
4	660020044 Advanced Survey	000-01-1990	000-01-2010	0000-0000-0000-0000	
14	660020044 Wall Angle	000-01-1990	000-01-2010	0000-0000-0000-0000	

Cancel Done

An ID number will appear only if a proper hardware key or other system identifier is found.

Clicks entry with no changes

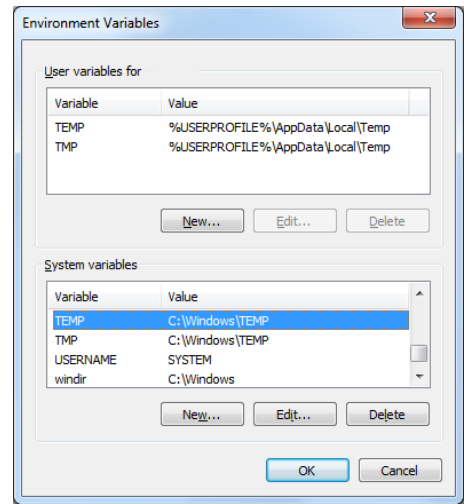
Click to close window

sample window only

Using the Processor Serial Number for Licensing

MetroPro supports the use of the processor serial number for system identification for the purpose of generating license codes. To use the processor serial number, an environment variable must be added to the system.

1. Point to the Windows Start button and select Control Panel and open the System icon.
2. In the control panel window, click Advanced system settings.
3. In the System Properties window, click the Environment Variables button.
4. Under System variables click the New button.
5. For Variable name type MPHL.
6. For Variable value, type PROCESSOR to use the corresponding identification. Then click OK.



To use Processor, the serial number feature for the processor may need to be enabled using the BIOS or some other utility.

7. Click OK on the series of open Dialog boxes.

Starting MetroPro

1. Turn on the computer and instrument. When the log on message appears, press CTRL+ALT+DEL to log on.
2. Choose zygo if there is a list of users. Do not enter a password. Press <Enter>.
3. Open MetroPro by-
Double-click the MetroPro program desktop shortcut, or
Click the Windows Start button and select MetroPro.



For normal everyday use, do not log on as “administrator,” use “zygo” or other user names. Zygo can be used as a username because during the factory installation, a “zygo” user account is created. If additional user accounts are needed they should be created within Microsoft Windows by the administrator.

MetroPro Icon
click to open MetroPro



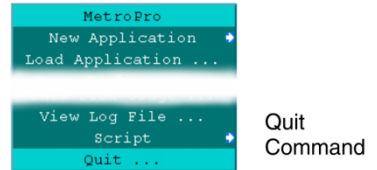
Quitting MetroPro



Use the Save Application command or the Re-save Application command to preserve any changes to the application before closing it.

1. To close open applications, click the close box in the upper *left* corner of each opened application window.
2. To quit MetroPro, click the close box on the *right* side of the MetroPro Window title bar.

An alternate technique is to select Quit from the MetroPro Window menu.



A Quick Look at Applications

You should become familiar with the parts that make up a MetroPro application. This terminology is used throughout the documentation. An application represents a particular use of the instrument and consists of one or more windows, boxes, and buttons. Most items have their own unique menus, accessed with the right mouse button.

Application Window

a specific configuration of windows, controls, and results

Buttons

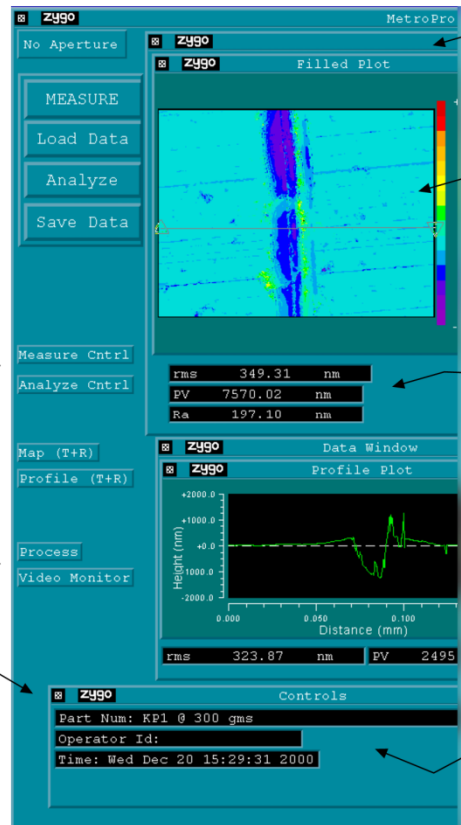
perform an action when clicked

Icons

represent closed windows

Control Window

contains functional items that determine how the instrument or software operates



Data Window

contain results and plots

Plot Window

display graphic results

Result Boxes

display numeric results

Control or Attribute Boxes

control analysis or show attributes

Upgrading MetroPro

Please contact ZYGO's Customer Support department using the contact information provided below.

Finding Information

ZYGO product information may be provided as separate manuals as listed below.

<i>Instrument Operation Manual</i>	various OMP's	Provides general description for your ZYGO instrument, including operational controls, installation, safety, and maintenance.
<i>Application Booklets</i>	various OMP's	Details on MetroPro applications specific to your instrument.
<i>MetroPro Quick-Start Guide</i>	OMP-0469	Starting, licensing, and navigating MetroPro software.
<i>MetroPro Reference Guide</i>	OMP-0347	The resource for information on MetroPro. Explains controls, results, windows, and other features of the software.
<i>MetroScript Programming Language</i>	OMP-0399	A guide to using MetroScript, MetroPro's scripting language. MetroScript is used to automate and customize MetroPro.
<i>MetroPro Remote Control Application</i>	OMP-0551	Describes controlling multiple ZYGO instruments through a local area network.



Manuals are available in electronic pdf form on CD or in paper form; contact your ZYGO representative for details. Electronic versions are also available online at www.zygo.com.

Customer Support

For help within North America, please use the contacts listed below. For help in other countries, please contact your local Zygo Corporation representative. Before contacting us, please have the instrument model, serial number, and the software version.



PHONE 860 347-8506
800 994-6669 *customer support*



INTERNET www.zygo.com
support@zygo.com

This document pertains to MetroPro version 9 and above.

Zygo Corporation
Laurel Brook Road
P.O. Box 448
Middlefield, CT 06455-0448
U.S.A.

Phone: (860) 347-8506
E-Mail: inquire@zygo.com
Web Site: www.zygo.com

OMP-0469F 03/2011
Copyright © 2011 Zygo Corporation
Zygo and the Zygo logo are
registered trademarks of
Zygo Corporation.